

PS6000 Series HMI Utility

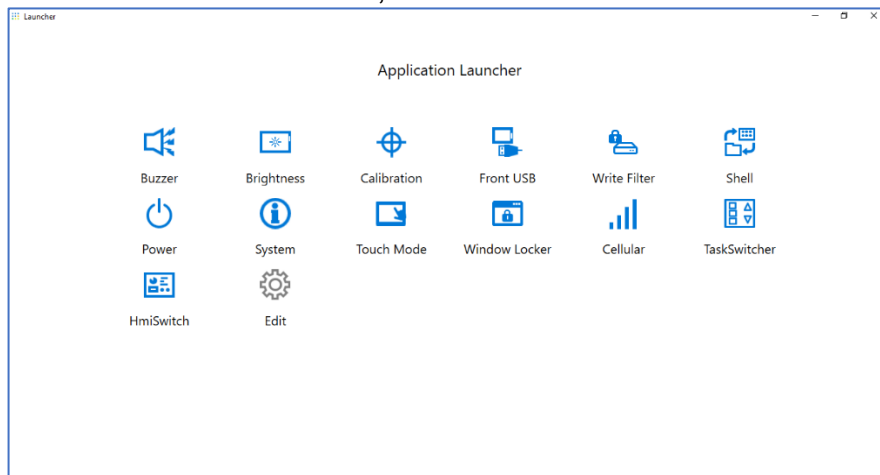
Title	PS6000 Series HMI Utility
Supported OS	Windows 10 64bit (Build version is 1809 or more.)
Description	When this utility is installed on a PS6000 Series, the PS6000 Series can use the following features. This additional function enables the PS6000 Series like an HMI product without being aware of the Windows OS.
	Utility Name
	<ul style="list-style-type: none"> ● HMI Switch ● Task Switcher
	Support HMI Runtime
	The HMI Runtimes supported by PS6000 Series HMI Utility are as follows. <ul style="list-style-type: none"> ● WinGP ● BLUE
Limitation	<p>Install the PS6000 / FP6000 Series utility before installing the PS6000 Series HMI Utility.</p> <p>when using the HMI Switch function, install the corresponding HMI Runtime before installing the PS6000 Series HMI Utility.</p> <p>After installing the PS6000 Series HMI Utility, the "edge swipe" function of the Windows OS becomes disabled.</p>

How to Install

1. Save the “PS6000 Series HMI Utility_yyyymmdd.zip” in the PS6000 Series product.
2. Unzip “PS6000 Series HMI Utility_yyyymmdd.zip” and execute setup.exe.
3. Restart the PS6000 Series product.

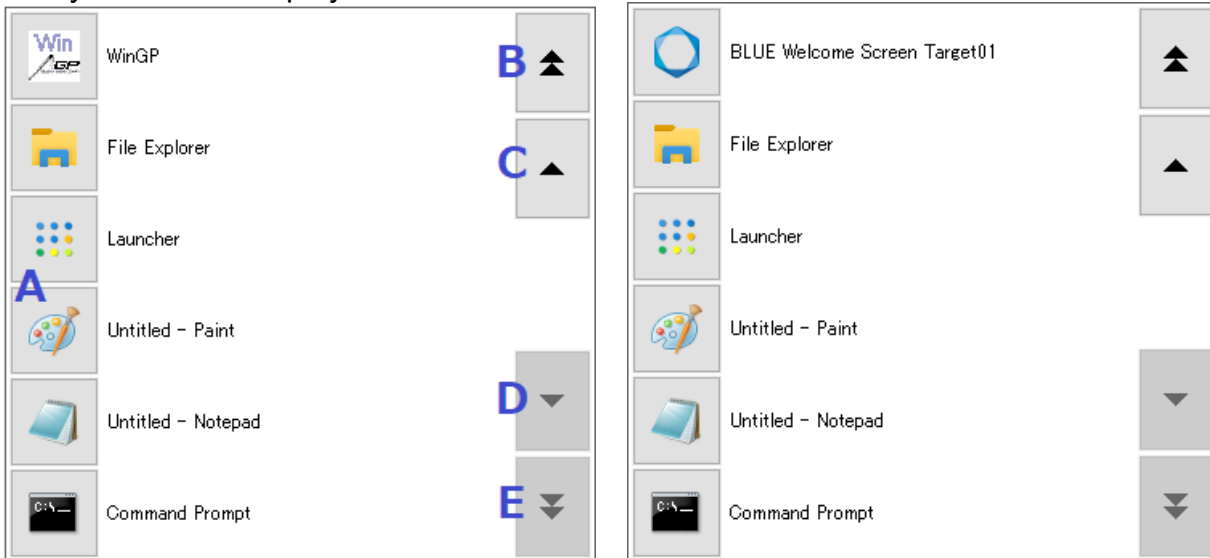
How to use HMI Utility

After installing HMI Utility, TaskSwitcher and HmiSwitch will be added to the Launcher.
If HMI Runtime is installed, HMI Runtime will start automatically.



Task Switcher

The Task Switcher is a function that lists the applications that are running and from which you can easily switch the display.



- A. Select the application or utility you want to view.
- B. Display the previous page's list.
- C. Display the previous application or utility in the list.
- D. Display the next application or utility in the list.
- E. Display the next page's list.

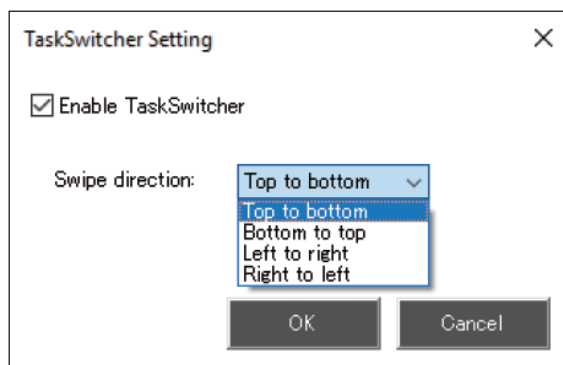
NOTE: The buttons for previous page, next page, and previous/next application or utility, appear only when there are 7 or more applications and utilities that are running.

Setup process

In the Launcher, touch the icon.

Select the swipe direction for enabling/disabling and starting the Task Switcher.

Default: Disable



HMI Switch

Touching the icon allows the following action to be taken depending on the status of the HMI Runtime.

HMI Runtime is not started : HMI Runtime starts.

HMI Runtime is started and not in the foreground : HMI Runtime displays in the foreground.

HMI Runtime is started and in the foreground : No action occurs.

HMI Runtime is not installed : No action occurs.